

# Normandin Beaudry mortality study



Numerous Canadian and international studies have demonstrated the strong correlation between an individual's socio-economic status and life expectancy.

## Robust, reliable data

Our team of specialists has conducted an in-depth study on mortality in Canada covering more than one million lives each year based on reliable data:

- Statistics Canada Census of Population
- Canadian Vital Statistics Death Database

This data gives us a credible way to identify mortality trends within subgroups of the Canadian population, according to various socio-economic indicators such as employment income and postal code.

## A rigorous methodology, producing accurate estimates

Using readily available data, we have developed a methodology that enables us to efficiently determine a best-estimate mortality assumption for pension plan members, taking into account specific socio-economic characteristics: their income and place of residence.



INCOME

+



PLACE OF  
RESIDENCE

=

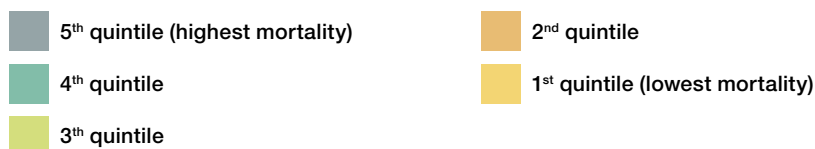
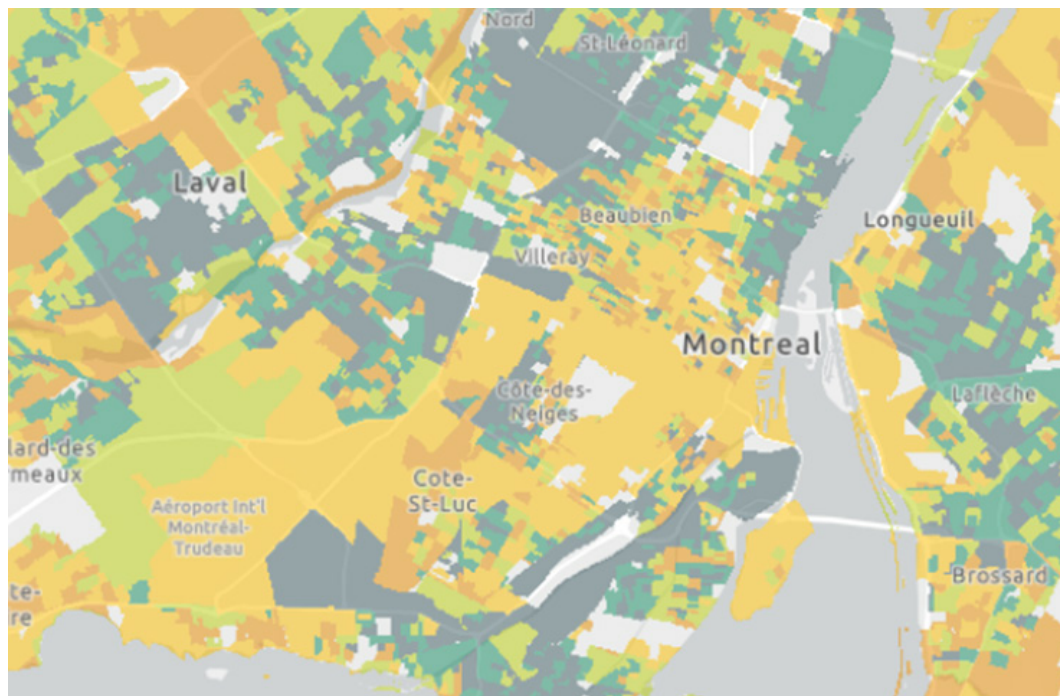


LIFE  
EXPECTANCY

This approach offers plan sponsors a more accurate estimate of plan member mortality and a more precise valuation of pension obligations. This can have a significant impact on plan funding and makes it possible to better assess the competitiveness of premiums proposed by insurers during annuity purchases.

Like several other studies conducted in Canada and abroad, our study revealed a strong correlation between a person's place of residence and life expectancy.

The below map illustrates expected mortality according to place of residence in the Montreal area.



PENSION | SAVINGS | PENSION PLAN ADMINISTRATION | INVESTMENT CONSULTING | GROUP BENEFITS | COMPENSATION | PERFORMANCE | HEALTH | COMMUNICATION

## Canadian excellence in total rewards

Founded in 1992, Normandin Beaudry is recognized for its leading-edge total rewards consulting services. Independent and wholly owned by an ever-growing number of its professionals, Normandin Beaudry has an ownership structure that puts it in a unique position as one of the few major firms in the field with exclusively Canadian interests. From offices in Montreal, Toronto and Quebec City, a team of over 350 professionals serves an enviable list of clients across Canada that includes organizations of all sizes and industries from the private, public, para-public and not-for-profit sectors.

Excellence spans the globe! As an independent and equal shareholder in MBWL International since 2023, Normandin Beaudry's reach now extends to 50+ countries.

Montreal • Toronto • Quebec City

[normandin-beaudry.ca](http://normandin-beaudry.ca)